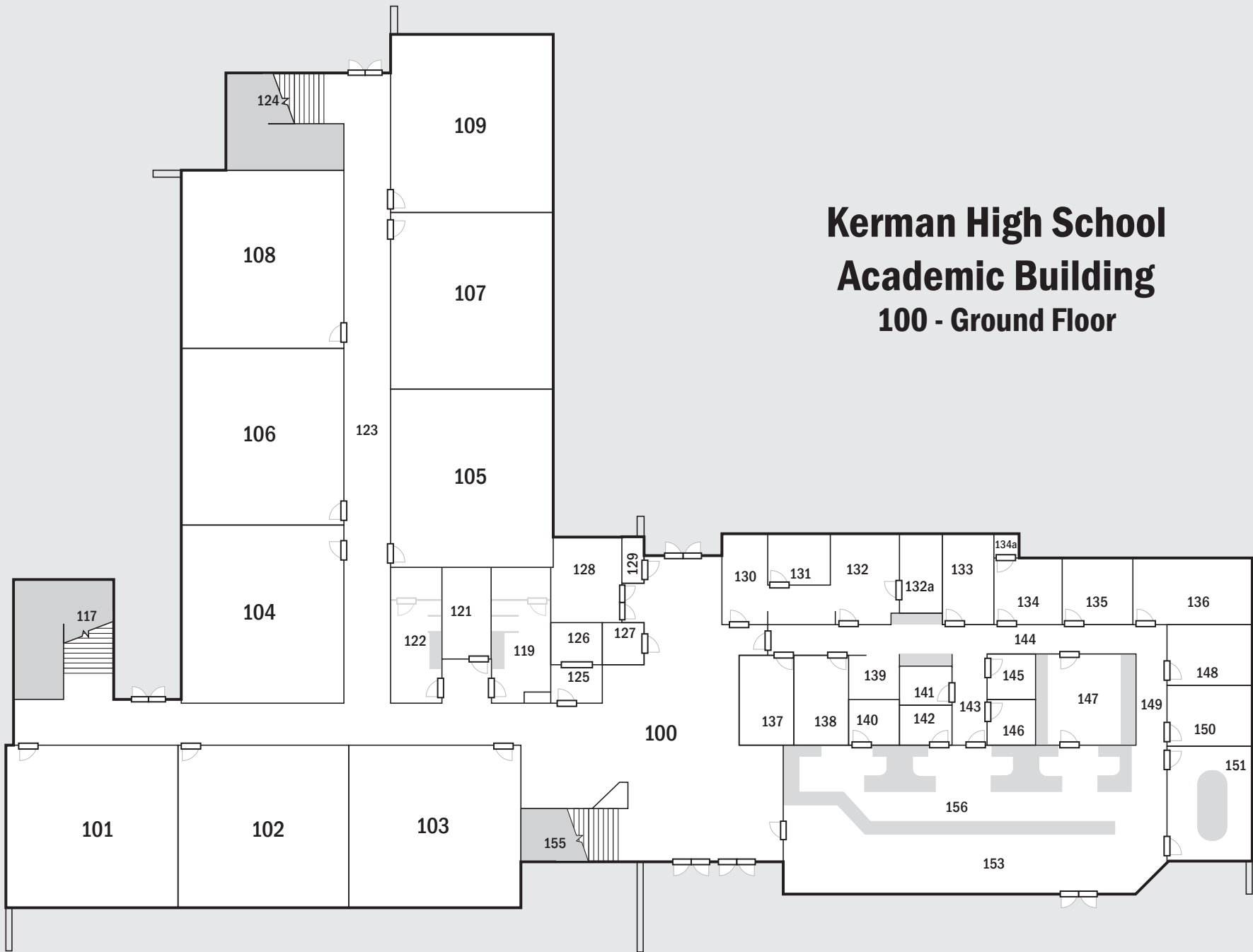


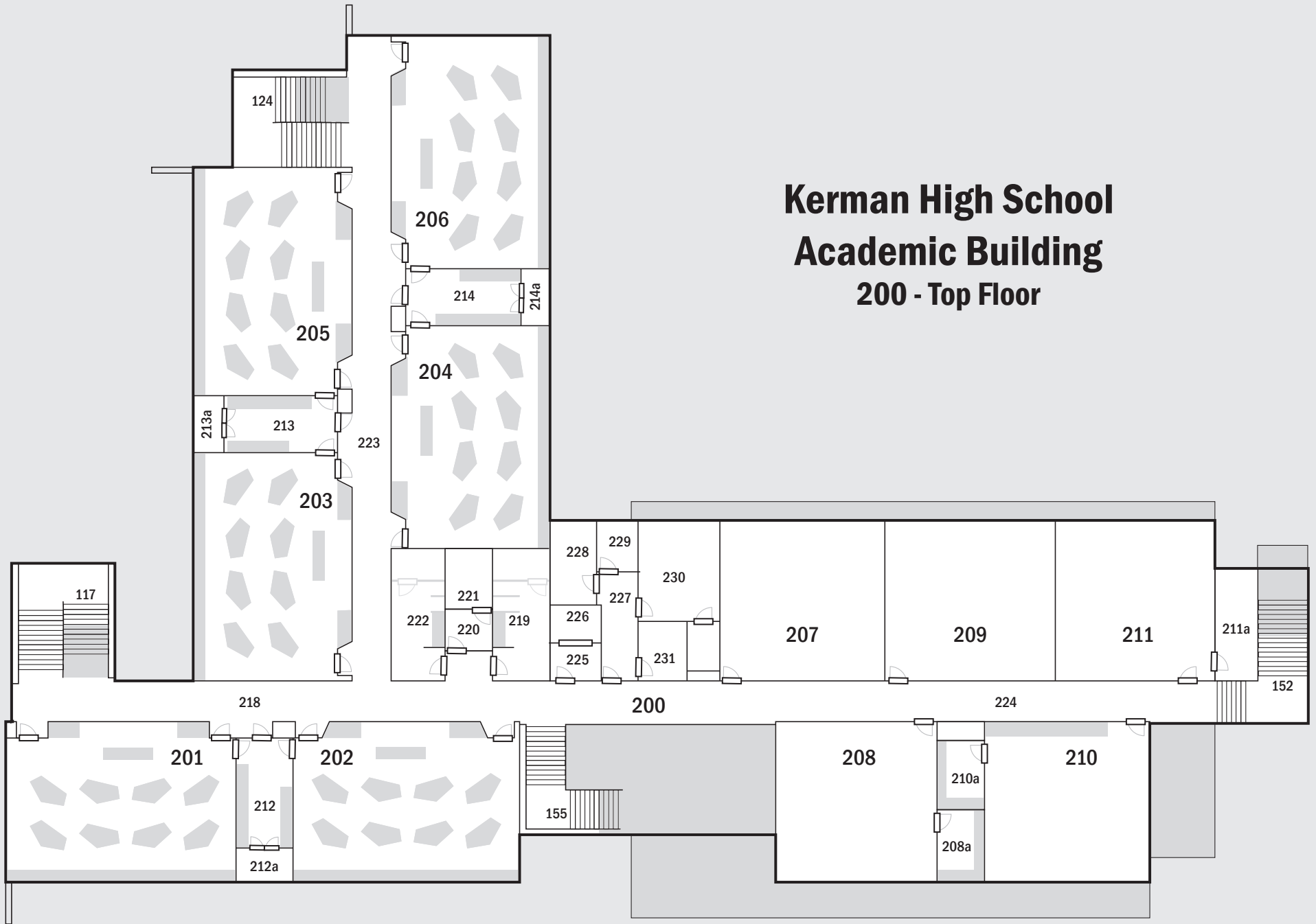
# Kerman High School

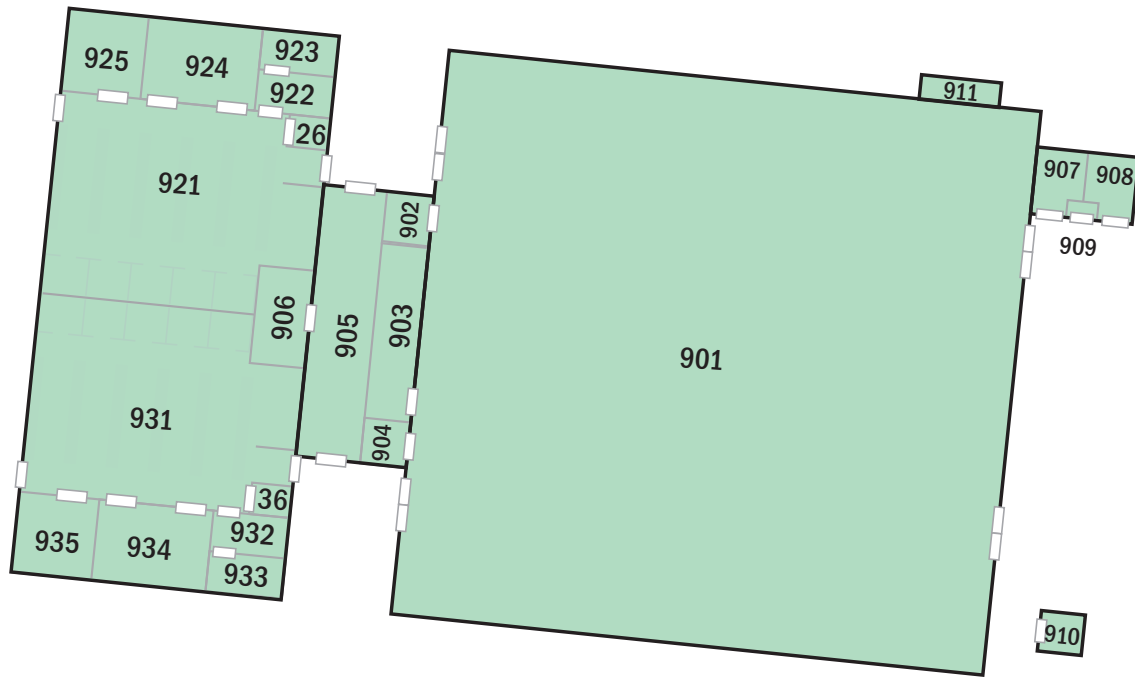
February 2020

# Kerman High School Academic Building 100 - Ground Floor

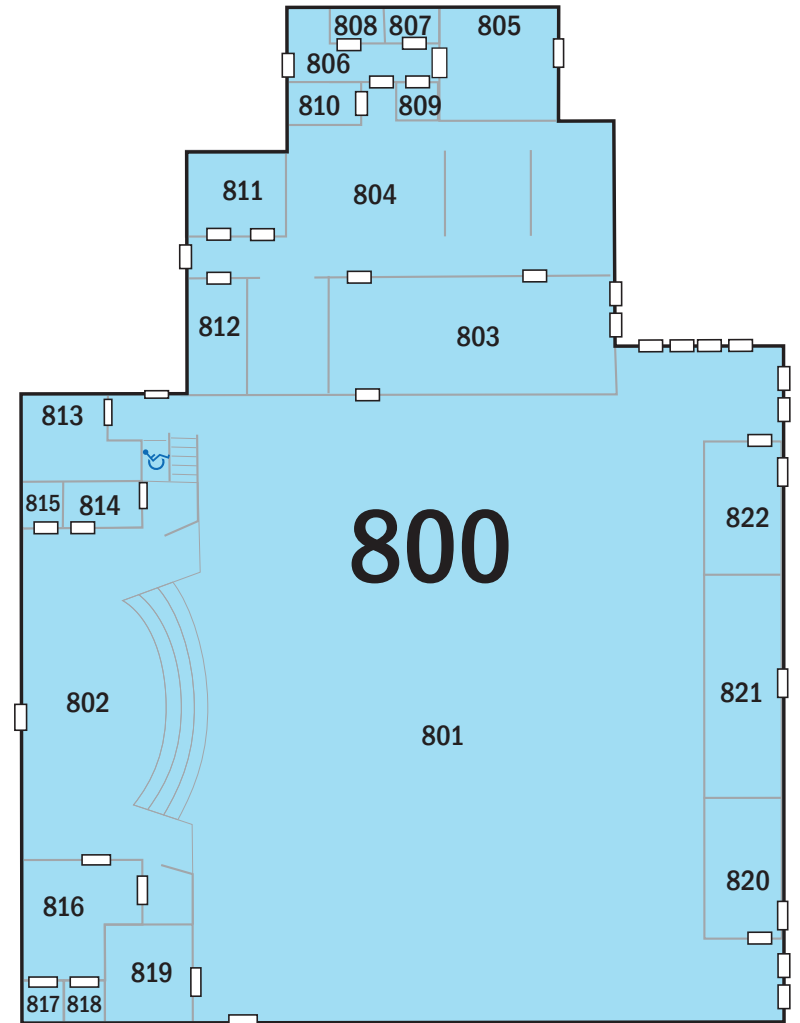


# Kerman High School Academic Building 200 - Top Floor

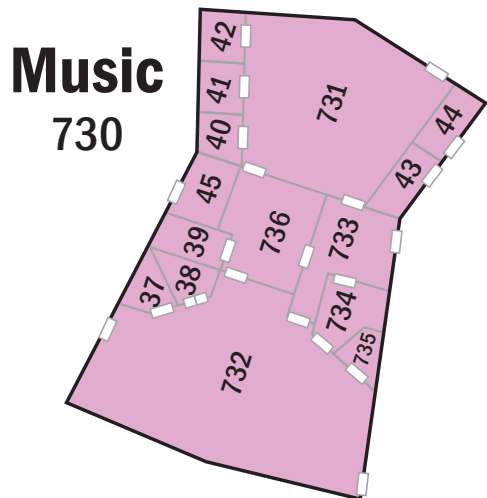




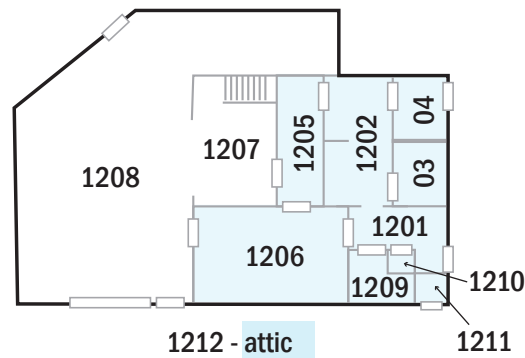
**Gym & Locker Rooms**  
900 / 920 / 930



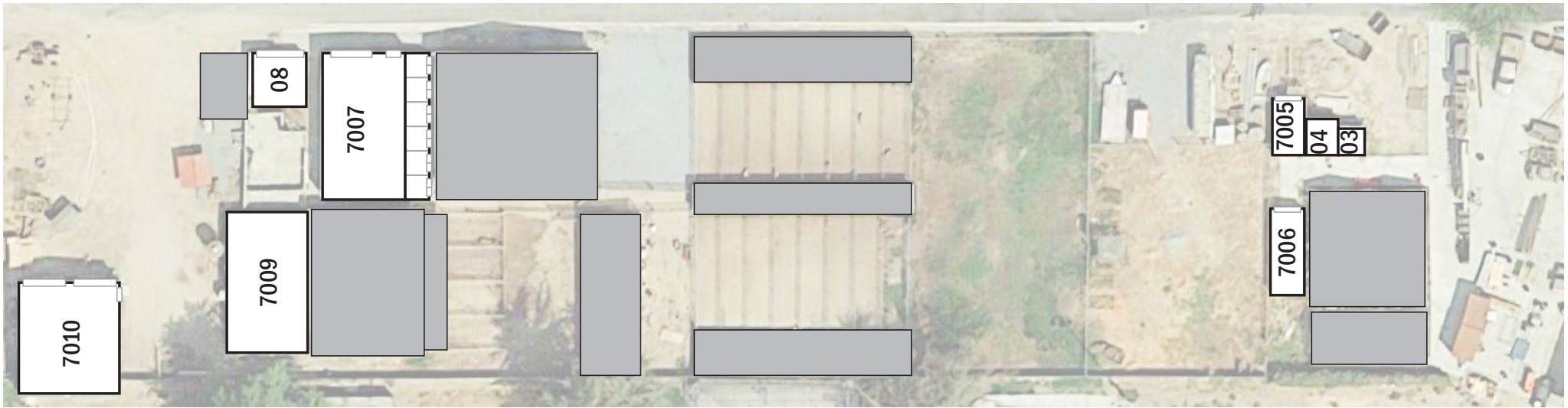
**Kerman High School - MPR**  
800



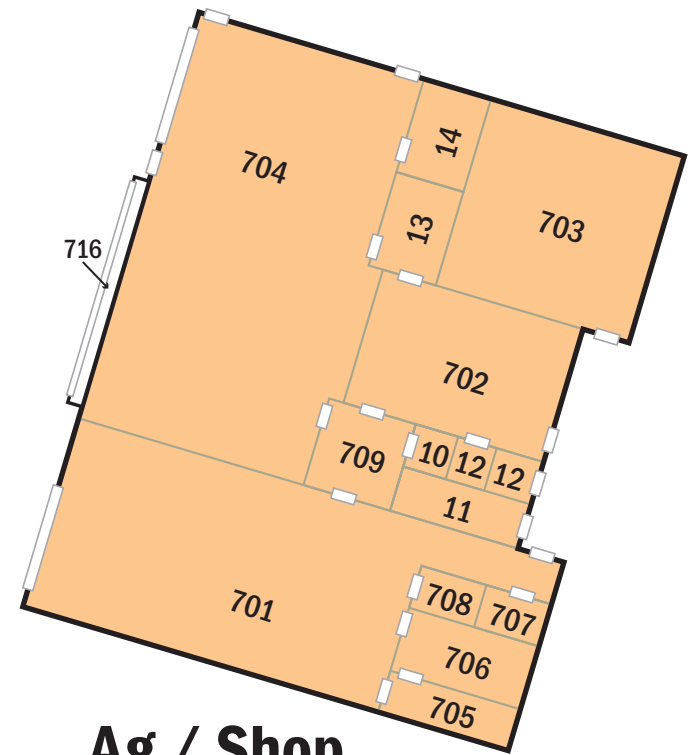
**Music**  
730



**ISC & Maintenance**  
1200



**Ag Utility**  
7000



**Ag / Shop**  
700